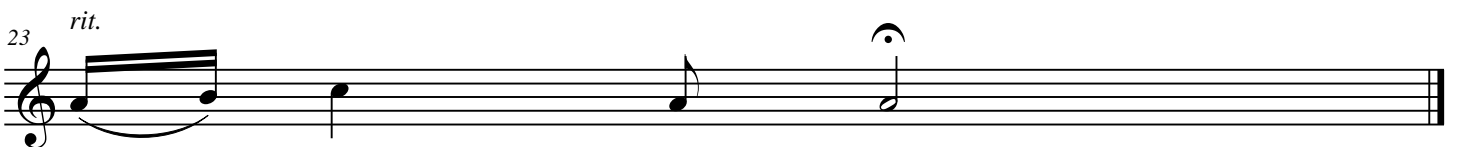


Vier miniatüren

Eberhardt Werdin

I. Präludium

Guitare 2



II. Serenade

The musical score for 'II. Serenade' is written on a single treble clef staff. It begins with a common time signature (C) and a first measure containing a whole rest with a '2' above it, indicating a second ending. The melody starts in the second measure with a quarter note G4, followed by eighth notes A4, B4, and C5, then a quarter note D5, and a quarter note E5. This is followed by a quarter rest, then a quarter note F5, and eighth notes G5, A5, and B5. The piece then changes to a 4/4 time signature, with a quarter note C5, a quarter note D5, a quarter note E5, and a quarter note F5. It returns to common time with a quarter rest, followed by a quarter note G4, eighth notes A4, B4, and C5, and eighth notes D5, E5, and F5. The score continues with measures 11 and 16, featuring various rhythmic patterns and dynamics. Measure 11 includes markings for 'rit.' and 'a tempo'. Measure 16 includes a 'rit.' marking and a double bar line.

2

7

11

16

rit. *a tempo*

rit.

rit.

III. Ballett

§

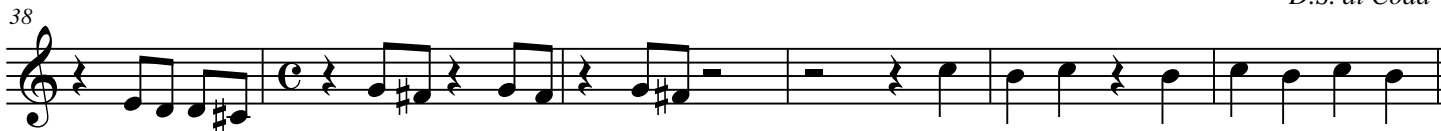


To Coda

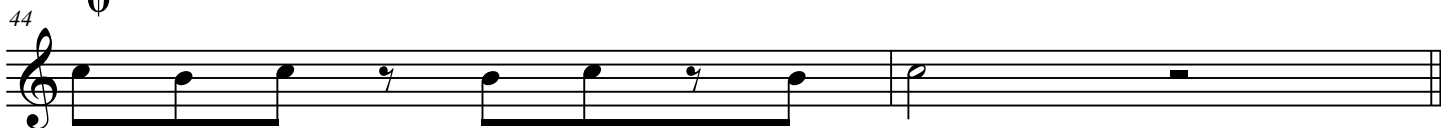


Tempo I

D.S. al Coda



sans ralentir



IV. Burleske

Rythme soutenu

The musical score for 'IV. Burleske' is written in a single staff on a grand staff. It begins with a treble clef and a 3/8 time signature. The first measure contains a whole note chord with a '2' above it. The melody then consists of eighth and sixteenth notes. At measure 10, the time signature changes to 4/8. At measure 20, there are accents (>) over several notes and a '5' above a measure. At measure 30, there is a '2' above a measure. The score concludes at measure 40 with a double bar line.