

Stabat mater

VI: Pro Peccatis

Arr: Serge Robert

Antonio Vivaldi

Andante

Flûte

Violon

Guitare

8

8

8

16

16

16

25 *trm*

Musical staff 1, measures 25-33. Treble clef, key signature of three flats. Measures 25-27 contain a melodic line with eighth-note patterns and a fermata. Measures 28-30 are whole rests. Measures 31-33 continue the melodic line with eighth notes and a fermata.

25 *trm*

Musical staff 2, measures 25-33. Treble clef, key signature of three flats. Measures 25-27 are whole rests. Measures 28-30 contain a melodic line with eighth-note patterns and a fermata. Measures 31-33 are whole rests.

25

Musical staff 3, measures 25-33. Treble clef, key signature of three flats. Measures 25-33 contain a bass line with chords and eighth notes.

34

Musical staff 4, measures 34-41. Treble clef, key signature of three flats. Measures 34-36 contain a melodic line with eighth-note patterns and a fermata. Measures 37-41 continue the melodic line with eighth notes and a fermata.

34

Musical staff 5, measures 34-41. Treble clef, key signature of three flats. Measures 34-41 are whole rests.

34

Musical staff 6, measures 34-41. Treble clef, key signature of three flats. Measures 34-41 contain a bass line with chords and eighth notes.

42

Musical staff 7, measures 42-49. Treble clef, key signature of three flats. Measures 42-44 contain a melodic line with eighth notes and a fermata. Measures 45-49 are whole rests.

42 *trm*

Musical staff 8, measures 42-49. Treble clef, key signature of three flats. Measures 42-44 contain a melodic line with eighth-note patterns and a fermata. Measures 45-49 continue the melodic line with eighth notes and a fermata.

42

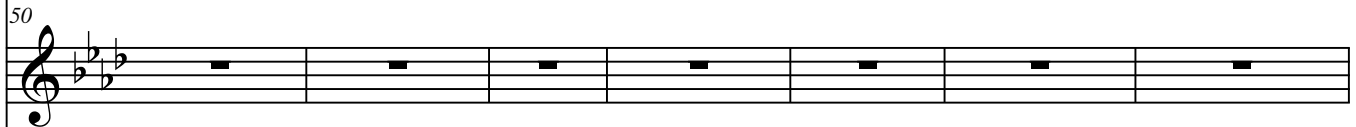
Musical staff 9, measures 42-49. Treble clef, key signature of three flats. Measures 42-49 contain a bass line with chords and eighth notes.

50



Musical staff 1, measures 50-56. Treble clef, key signature of three flats (B-flat, E-flat, A-flat). The staff contains a melodic line with eighth and sixteenth notes, some beamed together, and a fermata over the final note of the system.

50



Musical staff 2, measures 50-56. Treble clef, key signature of three flats. The staff contains a whole rest in every measure, indicating a silent part.

50



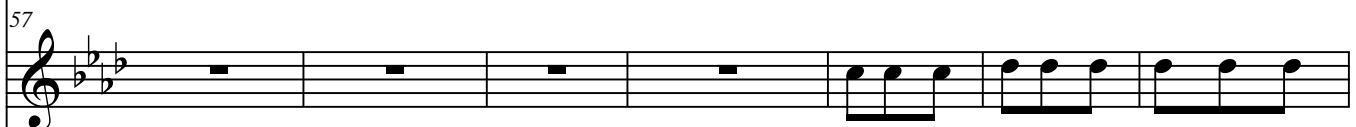
Musical staff 3, measures 50-56. Treble clef, key signature of three flats. The staff contains a bass line with eighth and sixteenth notes, some beamed together, and a fermata over the final note of the system.

57



Musical staff 1, measures 57-63. Treble clef, key signature of three flats. The staff contains a melodic line with eighth and sixteenth notes, some beamed together, and a fermata over the final note of the system.

57



Musical staff 2, measures 57-63. Treble clef, key signature of three flats. The staff contains a whole rest in measures 57-60, followed by eighth notes in measures 61-63.

57



Musical staff 3, measures 57-63. Treble clef, key signature of three flats. The staff contains a bass line with chords and eighth notes, including a fermata over the final note of the system.

64



Musical staff 1, measures 64-70. Treble clef, key signature of three flats. The staff contains a melodic line with eighth and sixteenth notes, some beamed together, and a fermata over the final note of the system.

64



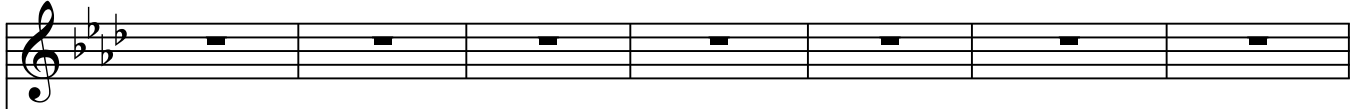
Musical staff 2, measures 64-70. Treble clef, key signature of three flats. The staff contains eighth notes in measures 64-69, followed by a melodic phrase with a fermata over the final note of the system.

64



Musical staff 3, measures 64-70. Treble clef, key signature of three flats. The staff contains a bass line with chords and eighth notes, including a fermata over the final note of the system.

71



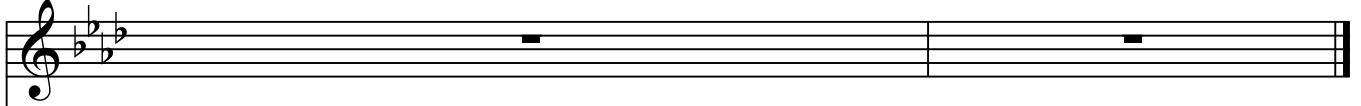
71



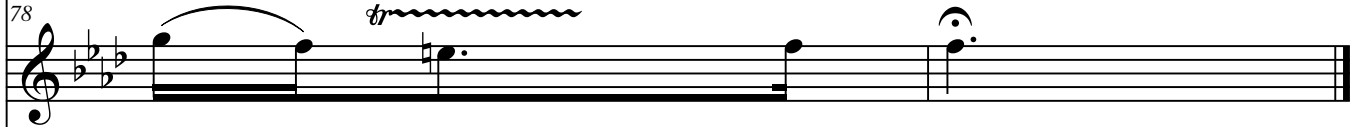
71



78



78



78

